

Paper Reference(s) 1SC0/1BH
Pearson Edexcel Level 1/Level 2 GCSE (9–1)

Combined Science
PAPER 1
Higher Tier

Tuesday 16 May 2023 – Morning

Diagram Booklet

In the boxes below, write your name, centre number and candidate number.

Surname					
Other names					
Centre Number					
Candidate Number					

INSTRUCTIONS

There may be spare copies of some diagrams in case you need them.

THIS DIAGRAM BOOKLET **MUST BE RETURNED WITH THE
QUESTION PAPER AT THE END OF THE EXAMINATION.**

Contents

Page

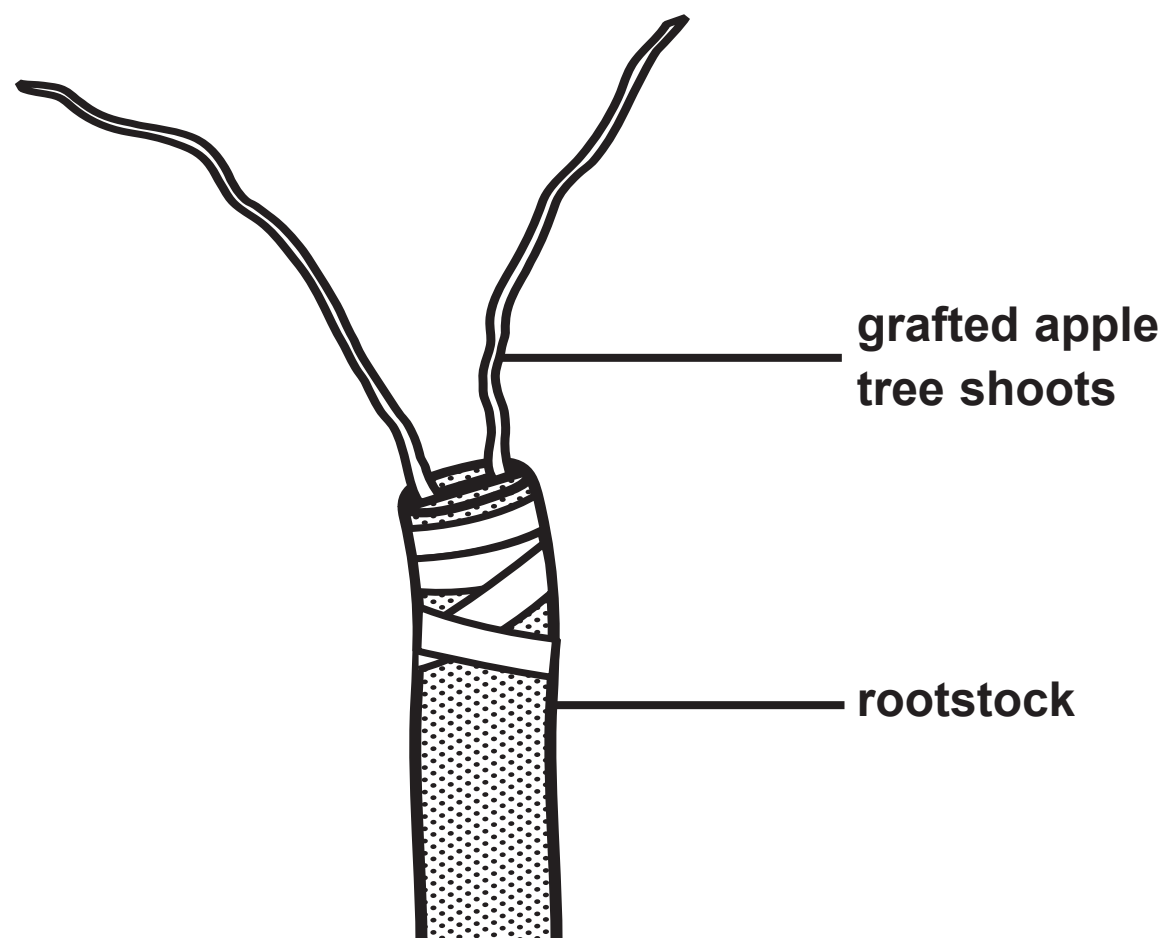
4	Question 1(b)
5	Question 2(a)
6	Question 3(a)
7	Question 3(b)(i)
8	Question 3(c)
9	Question 4(a)
10	Question 4(c)
11	Question 5
12	Question 5(a)
13	Question 6(b)

Spare Copies

14	Question 4(c)
-----------	----------------------

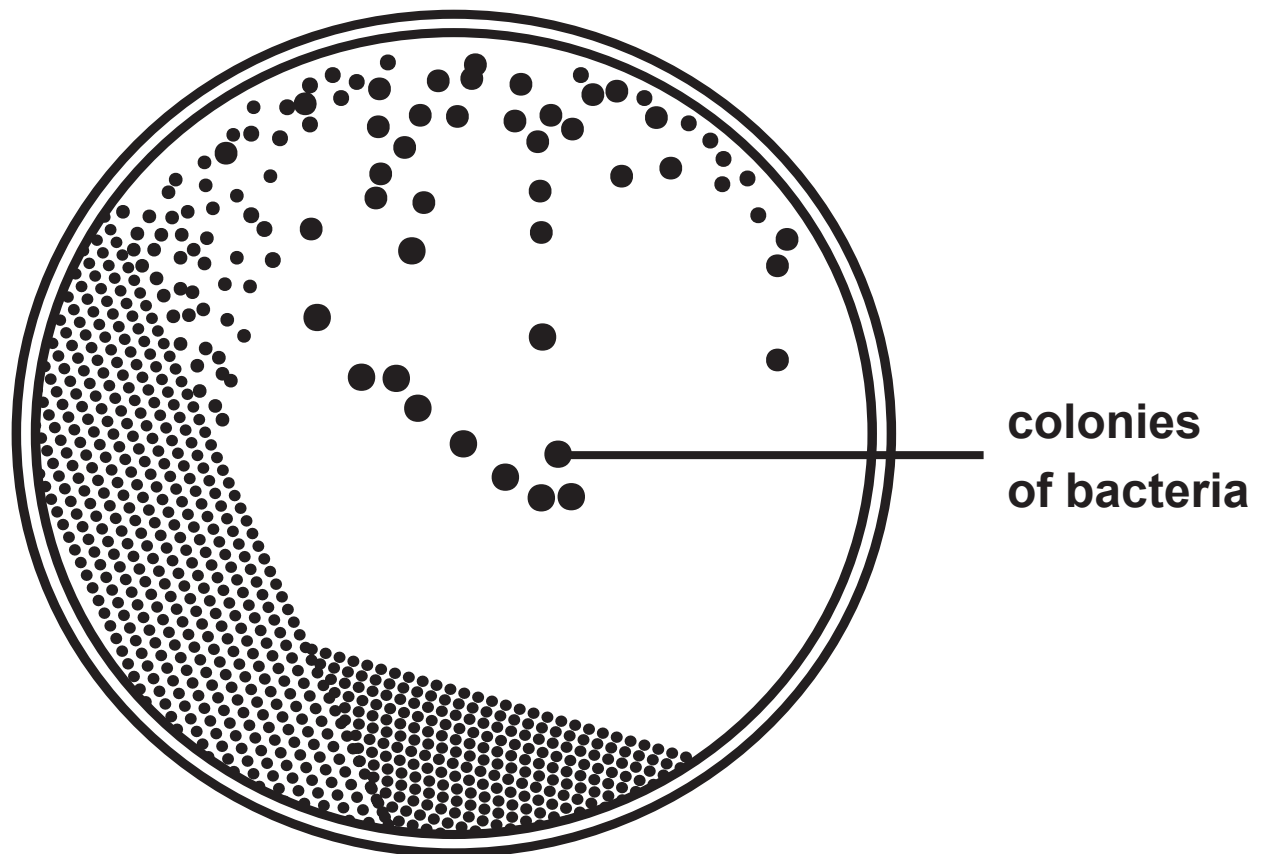
Question 1(b)

FIGURE 1



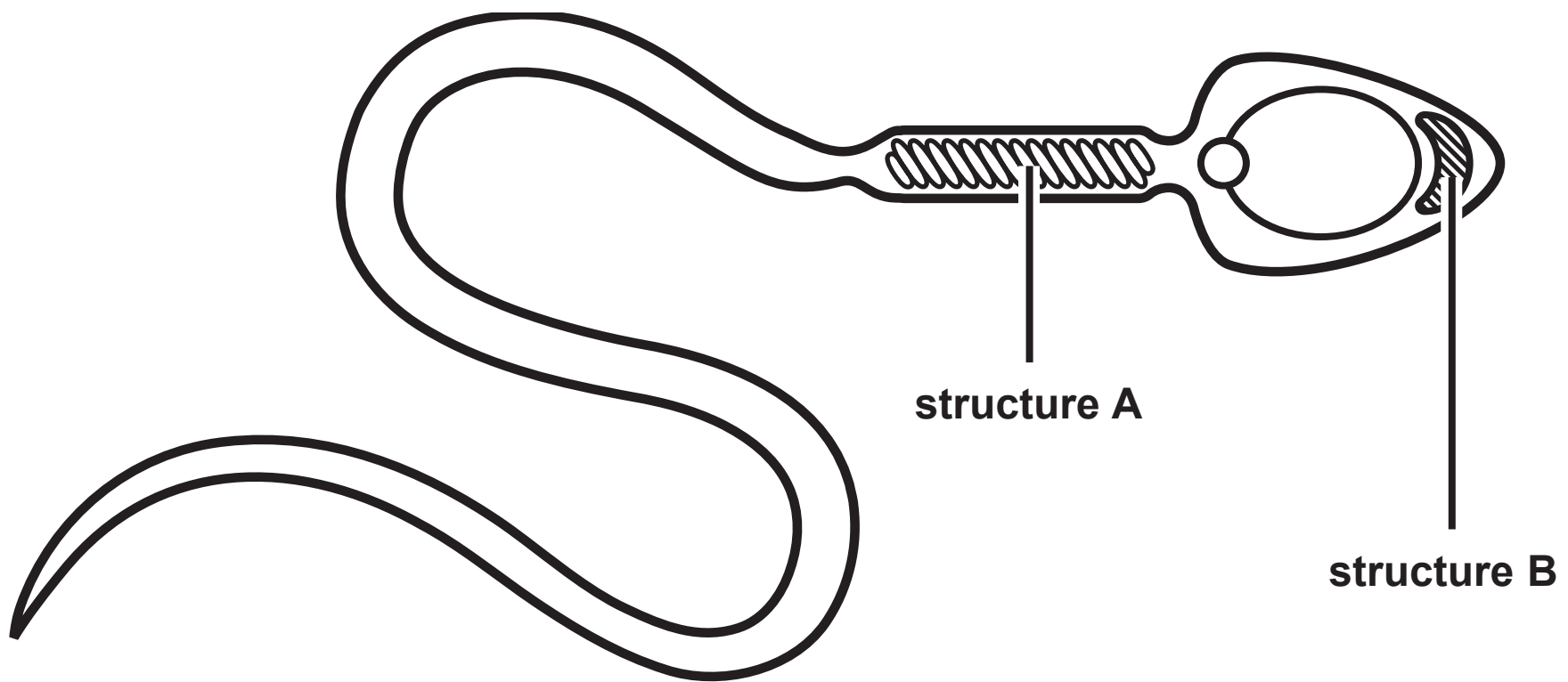
Question 2(a)

FIGURE 2



Question 3(a)

FIGURE 3

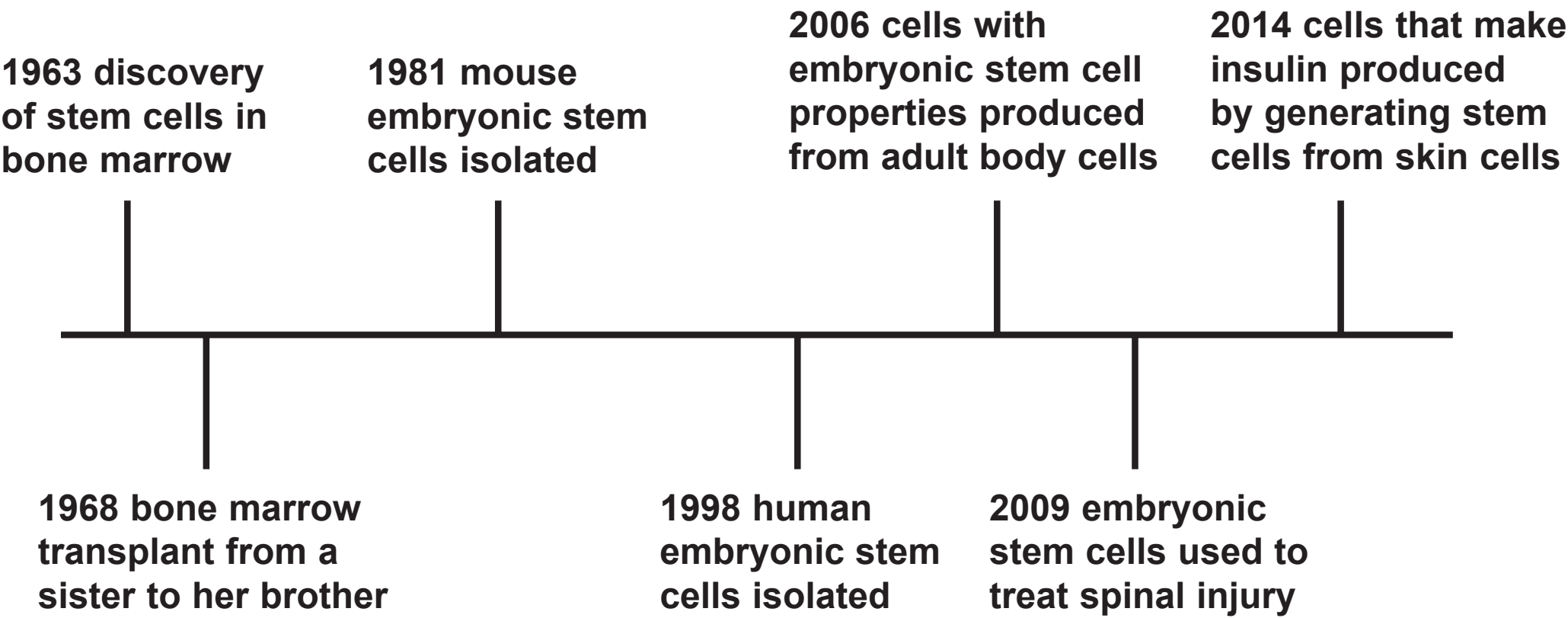


Question 3(b)(i)

- A metaphase → prophase → anaphase → telophase
- B prophase → metaphase → anaphase → telophase
- C anaphase → prophase → metaphase → telophase
- D prophase → anaphase → metaphase → telophase

Question 3(c)

FIGURE 4



Question 4(a)

The black and white photograph shows a bird with mottled feathers and a long, pointed bill standing on a piece of driftwood on a body of water. It has long legs and talons.

FIGURE 5

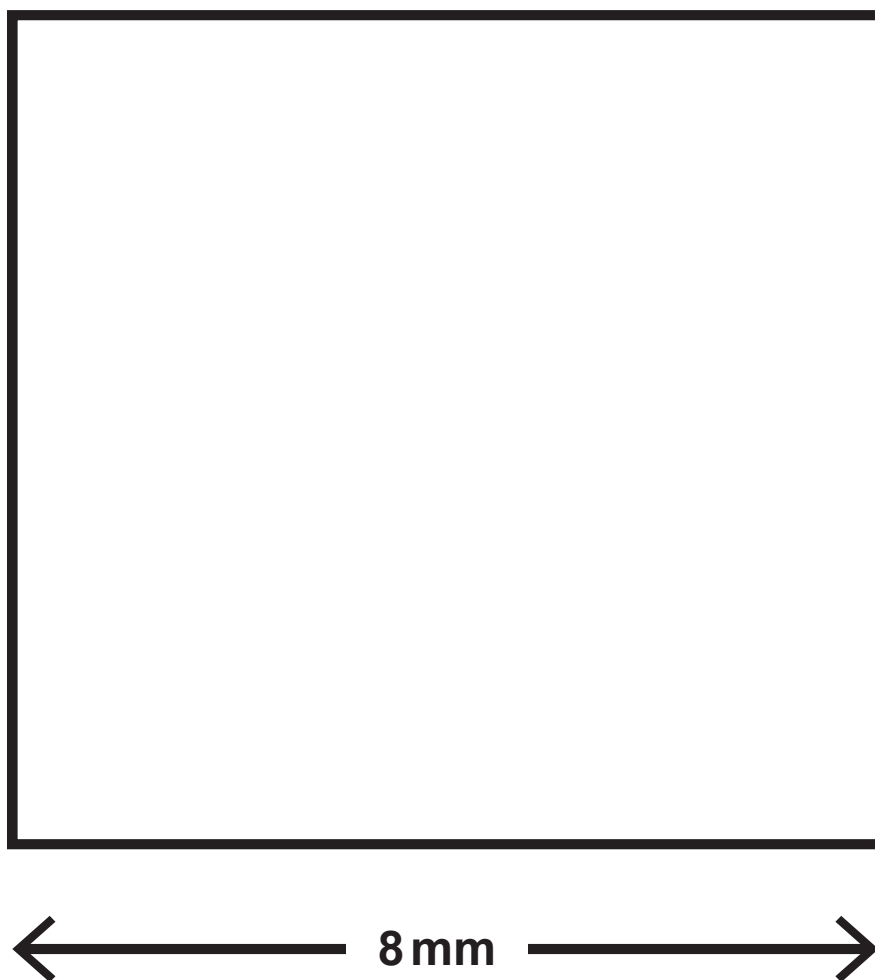


Question 4(c)

	male	
female		

Question 5

FIGURE 6



Question 5(a)

FIGURE 7

	starting mass in grams	final mass in grams
water	0.95	1.08
dilute salt solution	0.95	0.98
concentrated salt solution	0.94	0.88

Question 6(b)

FIGURE 8

measurement	data	guidance
BMI	28	18–25 healthy 26–30 overweight 30+ obese
waist:hip ratio	0.85	<0.9 healthy >0.9 abdominal obesity
alcohol units	3–4 units per day	<14 units per week
number of cigarettes smoked	0	do not smoke or vape

Question 4(c)

		male	
female			

Question 1(b)

Adapted from © ATTILA Barsan/Shutterstock

Question 2

Adapted from © Chatchouliya/Shutterstock

Question 4(a)

© Ildiko Laskay/Shutterstock